

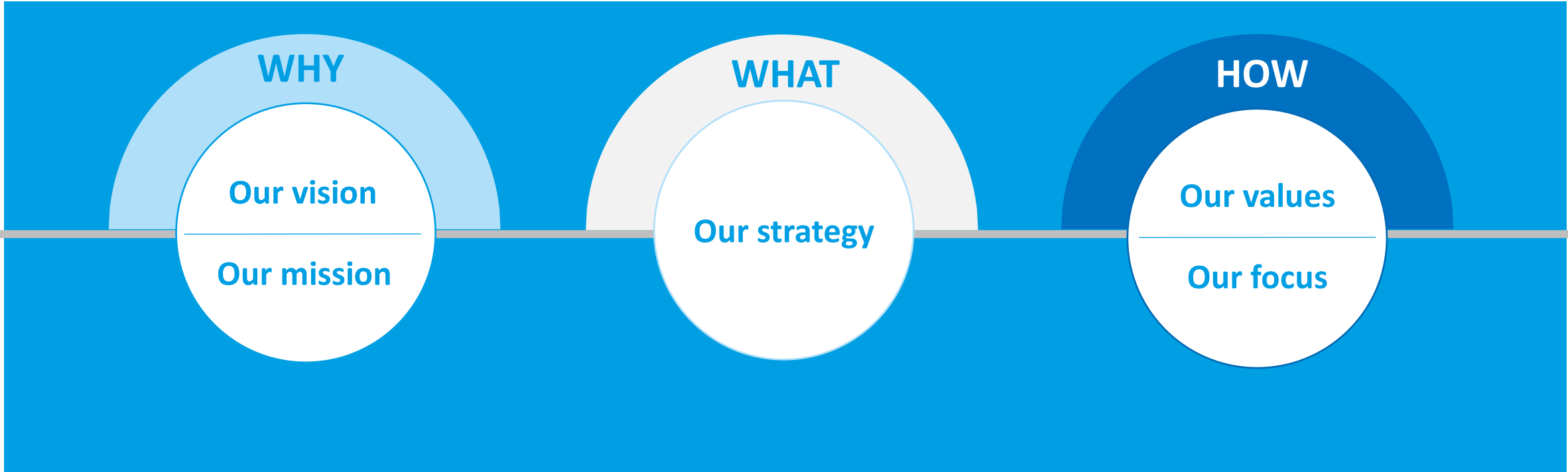
The Sioen logo is positioned in the top right corner. It features the word "SIOEN" in a bold, black, sans-serif font. The letter "O" is replaced by a blue circle with a white horizontal line through its center. The background of the entire page is a blurred image of a textile mill with rows of machinery and spindles. A large, solid blue shape overlaps the left and bottom portions of the image, serving as a background for the text.

SIOEN

Strategy

By Michele Sioen, CEO

Why, what, how



Improvements

7 Dimensions



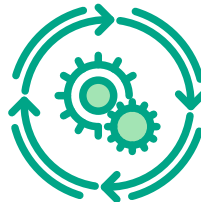
Purpose



Ambition



Strategy



Execution



Organisation



People



Reinvention

Our vision

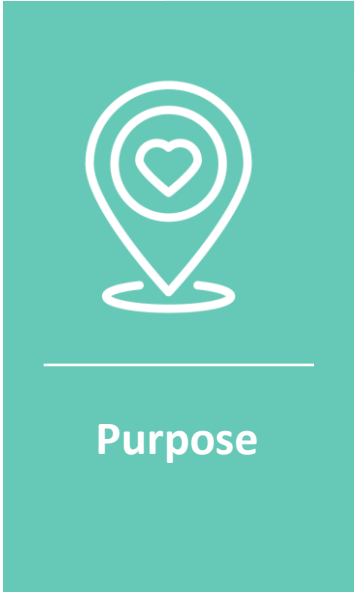
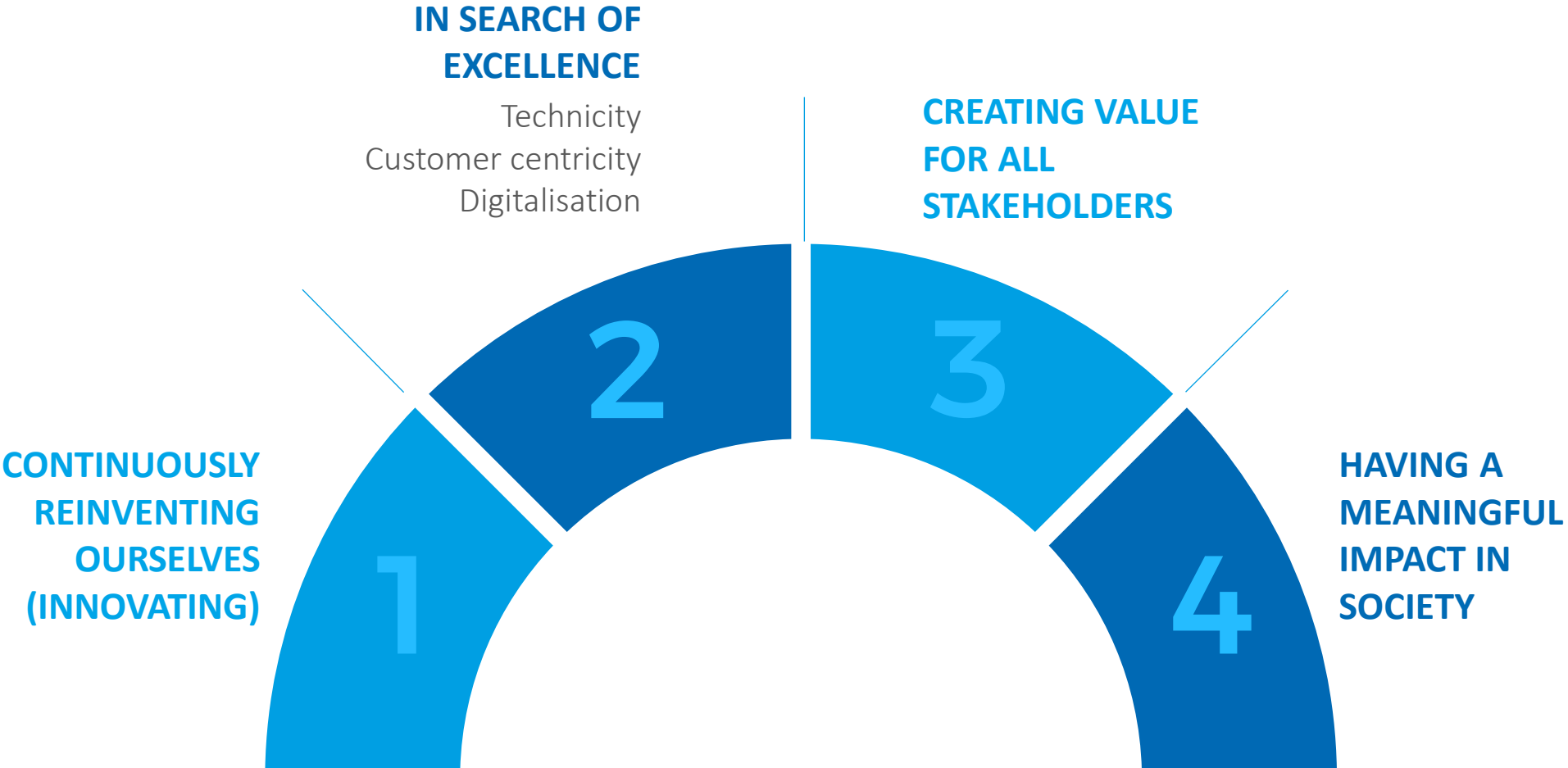


**To shape the future
of technical textiles.**



Ambition

Our mission



Our strategy

Vertical integration

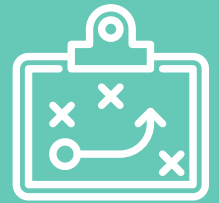
Innovation

Customer centricity

Market leadership

Sustainable growth

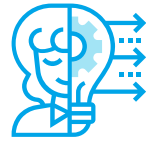
CSR



Strategy

Our values

At Sioen we are



**Entrepreneurial
and innovative**



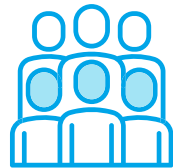
Creating value



Passionate



World citizens



**Integer
and ethical**



Accountable



**Respectful for
people and
environment**



Organisation



People